



The Smarter Dry Container

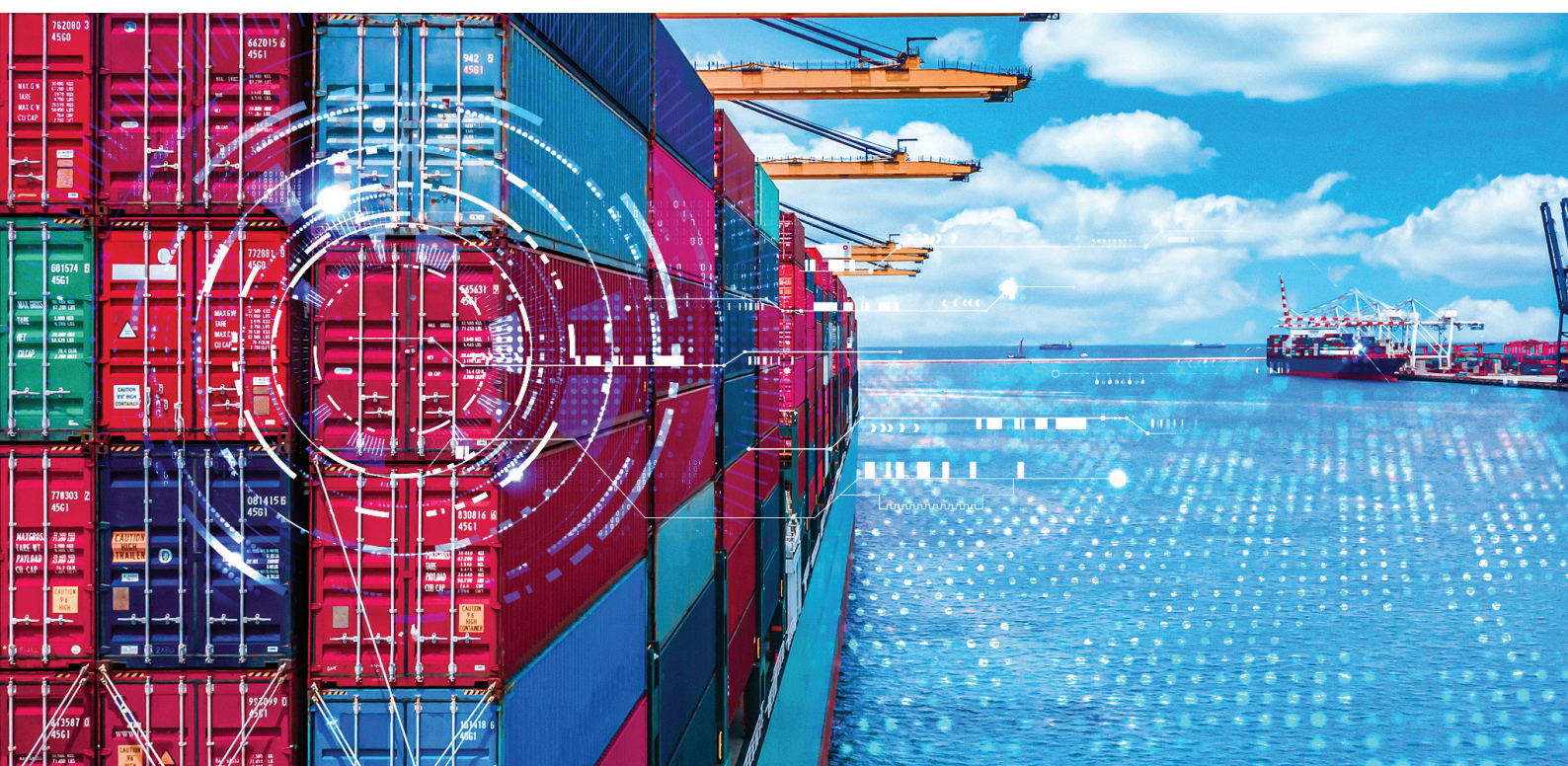
Asset visibility, cargo safety and container security

The global container shipping industry faces many challenges: route disruption, contraband and people smuggling, container damage and fires, protecting cargo integrity and the increasing demand for sustainability.

ORBCOMM's innovative smart dry container technology enables shipping lines to drive decisions with data, strengthening customer relationships, differentiating services, reducing business risk and creating new revenue streams through complete supply chain visibility, comprehensive cargo monitoring and advanced container protection.

The smarter dry container

ORBCOMM's solution is the first that digitalises global dry container shipping at scale, providing visibility, security and traceability for shipping lines and their customers so they can turn data into decisions for their maritime operations. With asset location tracking, integrated cargo protection sensors and alerts, shipping lines can optimise planning, estimate arrival times, help ensure cargo safety and container security, improve asset utilisation and reduce costs, creating a more sustainable and streamlined supply chain.



Know your containers inside and out

Improve planning with 24/7 visibility

Get location and status at every point of every asset's journey with remote data, geofencing and historical trip reporting. Reduce planning uncertainty with shipment visibility and traceability for accurate, predictive ETAs so shippers, BCOs and 3PLs can identify issues and quickly deploy corrective measures to mitigate delays.

Enhance cargo safety

Detect unauthorised access for people smuggling; cargo contamination by contraband placement; fire detection through heat monitoring inside the container; impacts through shock, freefall and rollover.

Improve container security

An array of sophisticated sensors detect fire outside the container, container damage through mishandling and container theft.

Optimise the supply chain

Minimise asset downtime and streamline distribution with early notifications of arrival times and delays. Drive improved container utilisation by identifying usage and wait patterns on a port-by-port basis.

Strengthen customer relationships

Shipping lines can use live data, historical reporting and integration through open APIs to differentiate container services and potentially create new revenue streams with actionable analytics.

Key features

Integrated door sensor

Detect door openings and closings with improved accuracy, minimizing false alerts.

Internal heat detection

Fast-responding infrared heat sensor for fire detection.

External temperature monitoring

Monitor for fire outside the container with absolute and rate-of-change temperature readings.

Shock and advanced motion

Monitor for container impacts, freefall and rollover with energy-based shock detection.

Tamper detection

Get real-time notification of device removal.

Light detection

Measure light intrusion for indications of potential container damage.

Adaptive power management

Automatically balance event reporting with available solar energy and battery levels.

Comprehensive location reporting

GPS locations with geofence reporting and configurable reporting frequency.

Global SIM, 4G LTE

Provides maximum global cellular coverage with CAT-1 roaming.

Integrated solar panel

Take full advantage of available sunlight with larger solar panels and energy harvesting.

“

ORBCOMM's advanced dry container solution offers the features and functionality we need to seamlessly manage our dry containers, while ensuring we **improve the efficiency, safety, profitability and customer service levels throughout our complex global supply chains.**

”

Olaf Habert

Director of Container
Applications at Hapag-Lloyd



Long lifecycle battery

Increased battery capacity provides up to three months of operation at 75% capacity without sun exposure.

Fast deployment

Install in as little as three minutes with minimal skills and tools thanks to an intuitive design.

Ruggedised

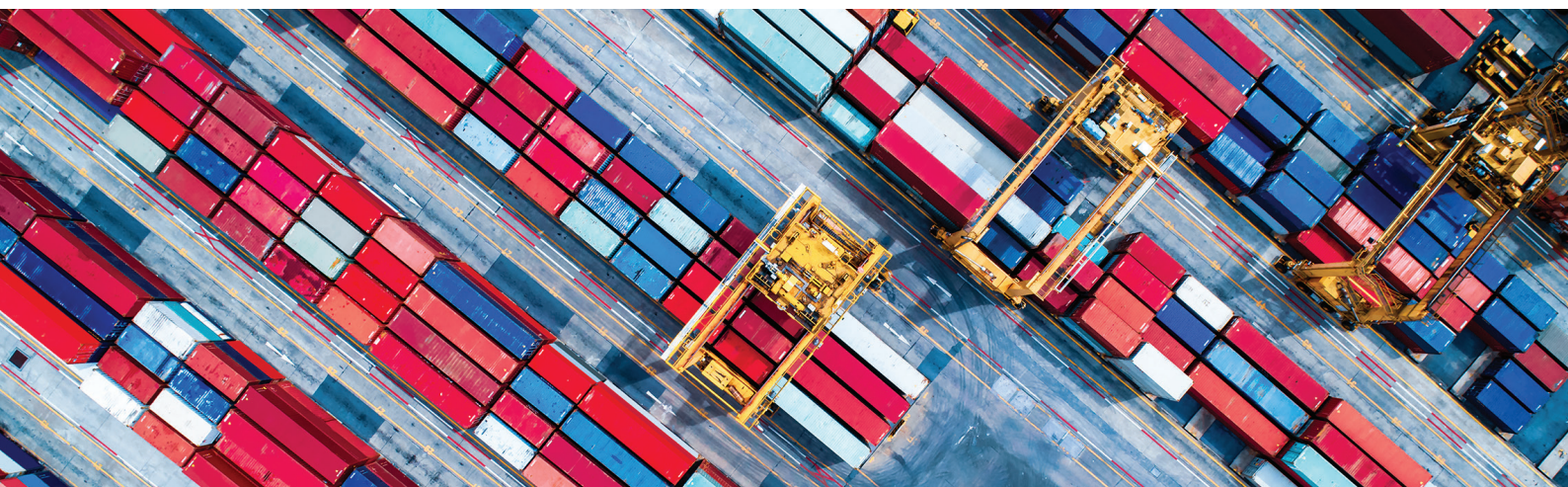
Rated for protection against dust and water ingress. Withstands shock, vibrations and temperatures ranging from -40 to +85°C and built to fit narrow corrugations in containers.

Built for harsh environments

ATEX Zone 2 certified to help meet international safety regulations.

Vessel networks

Communicate with crew onboard with cellular vessel networks and onshore with the ship's satellite Internet connection.



Five reasons to choose ORBCOMM

1 **All in one platform**

Get a single view of all your assets—container, reefer, chassis and vessel—all on one screen. A unified view makes it easier for shipping lines to monitor, analyse, plan and optimise the entire asset journey in the supply chain on one platform.

2 **Proven**

Choose a solution proven through decades of experience and expertise—ORBCOMM developed the industry standard for remote monitoring and management of containers and cargo, deployed on more than one million dry containers and 300,000 reefers worldwide. ORBCOMM's container solutions deliver complete visibility and control for improved cargo operations.

3 **Always connected**

With our onboard cellular networks, AIS services, multiple terrestrial and satellite network technologies and 24/7

data monitoring services,, ORBCOMM offers unmatched global coverage to support diverse use cases and mission-critical information streams, even for assets far at sea.

4 **Interoperable**

Supporting communication standards and data models set by the COA and DCSA, ORBCOMM's devices and open platforms allow easy data sharing with partners, customers and other stakeholders to integrate seamlessly with third-party devices, data streams and enterprise platforms.

5 **Innovative**

ORBCOMM multimodal solutions combine tracking and sensor hardware, connectivity services and applications to deliver complete device-to-dashboard solutions. This end-to-end approach eliminates the time, expense and headaches involved with integrating different elements from different vendors.

For more information on our solutions or to book a demo, email us at: info@ORBCOMM.com

Visit our website www.ORBCOMM.com

Although we strive to ensure accuracy in all of our published specifications, actual field performance can vary depending on a variety of environmental, installation and usage factors, as well as third-party factors such as cellular providers. The specifications listed are approximations, and do not constitute binding statements or modify the terms and conditions of purchase or lease including, but not limited to, product operational limitations and warranties. All specifications are subject to change without notice. Please check www.orbcomm.com to ensure you have the latest version of these specifications.



ORBCOMM is a global leader in industrial IoT, delivering visibility, intelligence and efficiency to the world's most critical operations. With 30 years of innovation and more than 2.4 million connected devices, we transform data into actionable insights, driving greater efficiency, safety, resilience and sustainability. Serving customers that include the world's largest shipping lines, over-the-road trucking fleets, cold-chain transportation fleets and a global network of IoT solution provider partners, ORBCOMM is where IoT powers asset intelligence.